



**TELEDYNE HASTINGS INSTRUMENTS**  
Everywhere you look™

## MODELS

VT-4A, VT-4AB,  
VT 4S2, VT 4S5

VT-6A, VT-6AB,  
VT 6S2, VT 6S5

## FEATURES

- Operates Hastings Instruments most popular DV-4 and DV-6 Gauge Tubes.
- RANGES
  - DV-4 (0-20 Torr)
  - DV-6 (0-1000 mTorr)
- Compatible with Calibration Reference Tubes
- 0-1 VDC Output (non-linear)
- Dial face available in Torr, mbar, or Pa

## APPLICATIONS

- Vacuum Metallurgy
- Vacuum Furnace
- Refrigeration (HVAC)
- Freeze Drying
- Lamp/Bulb Manufacturer
- Power/Transformer Maintenance
- Cryogenic/Vacuum Insulation

## BENEFITS

- Reliable
- Needle Movement shows rate of change
- Easy to Install and Use

# VT Vacuum Measurement



## DESCRIPTION

Teledyne Hastings Instruments (THI) VT-Series Vacuum Gauges are the original models that have generated repeat customers for over 60 years. Their reputation is built upon exceptional stability, accuracy, and reliability under the most demanding conditions.

VT-Series Vacuum Gauges are available in two standard ranges: 0-1000 mTorr and 0-20 Torr. A self-contained gauge circuit is attached to the rear of the direct reading meter. All VT-Series Vacuum Gauges feature long life and minimal maintenance.

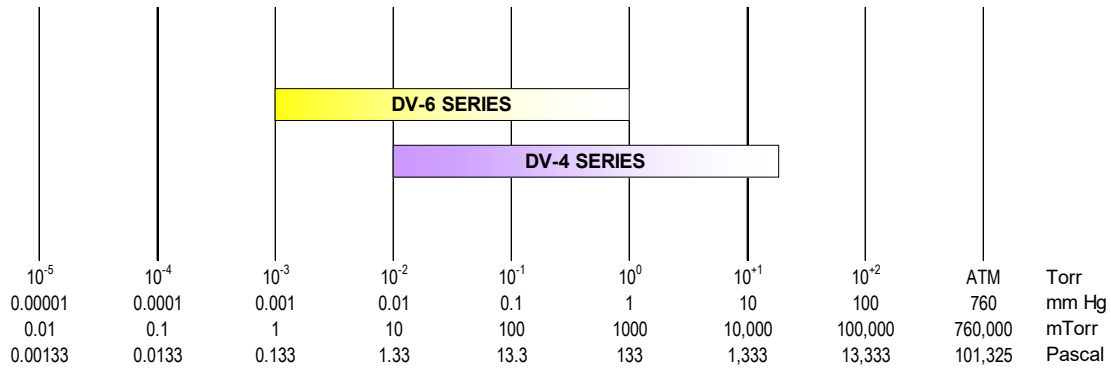
These instruments utilize THI's rugged but sensitive noble metal Thermocouple gauge tubes that are designed specifically for each range. Tubes are matched and interchangeable without calibration adjustments. They are compensated for temperature and rate of temperature change and are corrosion-resistant.



**TELEDYNE HASTINGS INSTRUMENTS**  
Everywhere you look™

## Specifications and Standards

Thermocouple Gauge Pressure Ranges



### Specifications

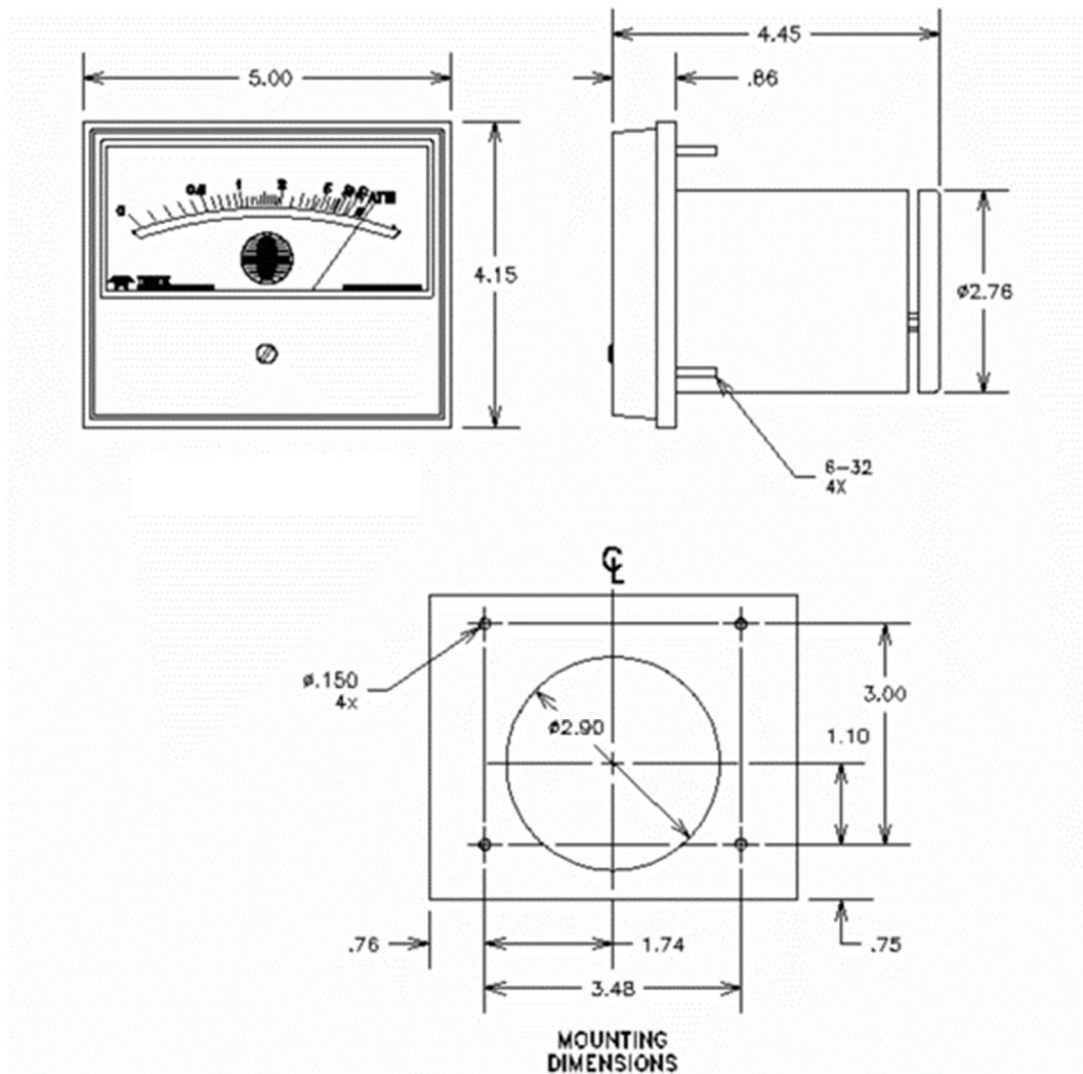
### VT SERIES

Range	VT-4A, VT-4AB VT 4S2, VT 4S5	0-20 Torr
	VT-6A, VT-6AB VT 6S2, VT 6S5	0-1000 mTorr
Power Requirement	115 vac, 50/60 Hz Current 230 vac, 50/60 Hz Current	
Weight	VT-4A, VT-6A,	1.3 lb
	VT-4AB, VT-6AB	3.8 lb
	VT 4S2, VT 6S2	4.6 lb
	VT 4S5, VT 6S5	4.6 lb

Hastings Instruments reserves the right to change or modify the design of its equipment without any obligation to provide notification of change or intent to change.

## Outline Drawings

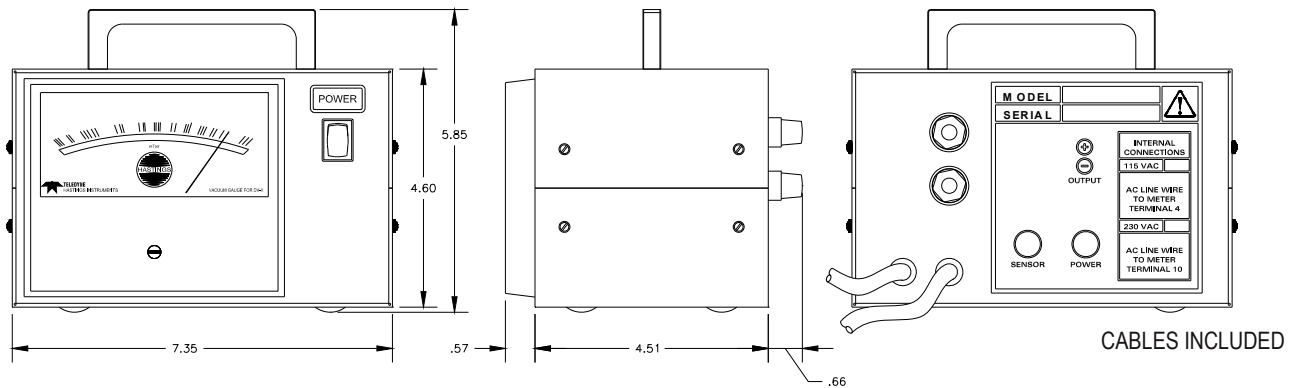
VT - 4A, VT - 6A



## Outline Drawings Cabinet Models

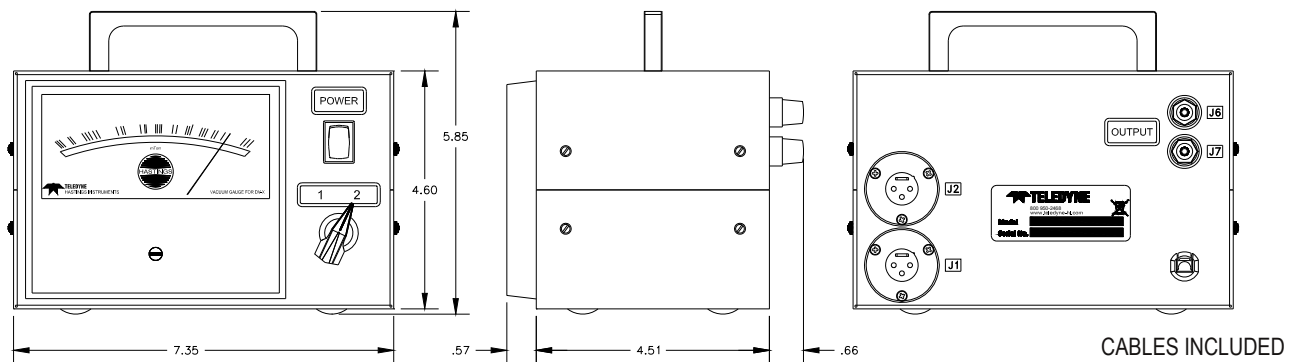
### SINGLE CHANNEL

VT -4AB, VT - 6AB



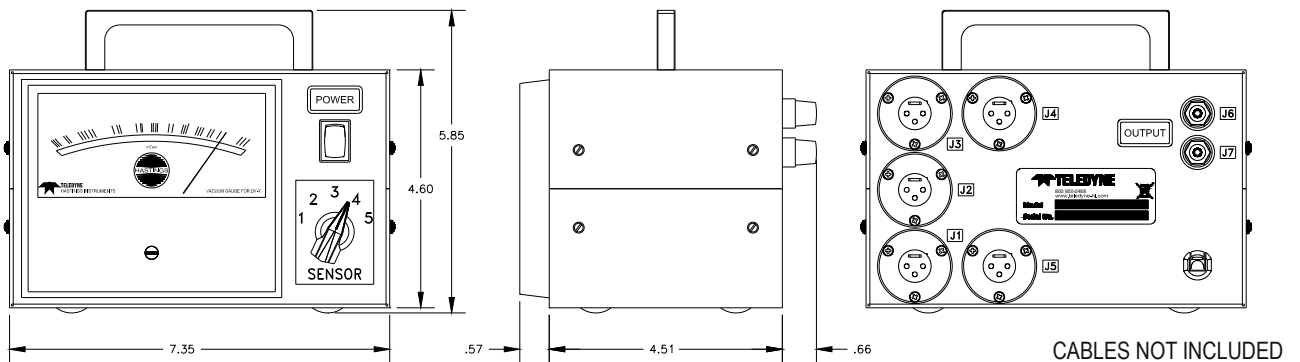
### TWO CHANNELS

VT 4S2, VT 6S2



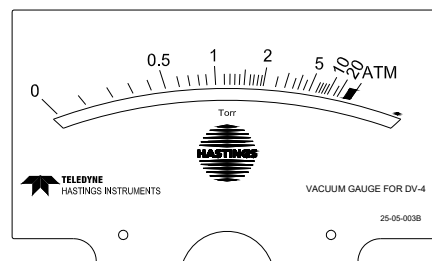
### FIVE CHANNELS

VT 4S5, VT 6S5



## Selection Chart, VT-4 Series

**VT - 4 Series Vacuum Gauge: 0-20 Torr Range**



### Model Numbers

VT-4A, VT-4AB

VT 4S2, VT 4S5

### Stock Numbers

(preconfigured for fast delivery)

VT-4A Panel Mount, Torr, Dial Face, 115 vac

VT-4AB Cabinet Model, Torr, Dial Face, 115 vac

### Configuration Codes

VT 4A X Y Panel Mount

VT 4AB X Y Cabinet Model

VT 4S2 X Y Cabinet Model with 2 Position Switch

VT 4S5 X Y Cabinet Model with 5 Position Switch

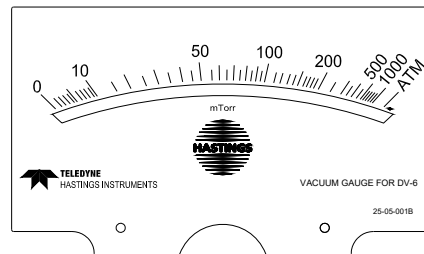
**X** 0 = Torr 1 = mbar 2 = Pascal

**Y** 0 = 115 vac 1 = 230 vac

Example: **VT-4A, 2, 0** (Panel Mount with Pascal Dial Face for 115 vac operation)

## Selection Chart VT-6 Series

**VT - 6 Series Vacuum Gauge: 0-1000 mTorr Range**



### Model Numbers

VT-6A, VT-6AB

VT-6S2, VT-6S5

### Stock Numbers

(preconfigured for fast delivery)

VT-6A	Panel Mount, Torr, Dial Face, 115 vac
VT-6AB	Cabinet Model, Torr, Dial Face, 115 vac

### Configuration Codes

VT 6A	X Y	Panel Mount
VT 6AB	X Y	Cabinet Model
VT 6S2	X Y	Cabinet Model with 2 Position Switch
VT 6S5	X Y	Cabinet Model with 5 Position Switch

**X** 0 = Torr      1 = mbar      2 = Pascal  
**Y** 0 = 115 vac    1 = 230 vac

Example: **VT-6A, 2, 0** (Panel Mount with Pascal Dial Face for 115 vac operation)



Telephone: (757) 723-6531  
Toll Free: (800) 950-2468  
www.teledyne-hi.com  
E-mail: [hastings\\_instruments@teledyne.com](mailto:hastings_instruments@teledyne.com)  
804 Newcombe Avenue  
Hampton, VA 23669

**ISO 9001**  
CERTIFIED